

SELF-PRIMING CENTRIFUGAL SOLIDS HANDLING PUMP

Series: BSPO3LA8D
Spherical solids handling: 1¼"
Frame mounted



SIZE

3" x 3" ANSI, 125 lb. flange.

LIQUID TEMPERATURE

160°F (71 °C)

CASING

Cast iron ASTM A-48 class 30.

IMPELLER

Design: 2 vane, open.

Material: cast iron ASTM A-48 class 30.

SHAFT

High carbon steel.

END COVER PLATE

Cast iron ASTM A-48 class 30, removable, full diameter.

VOLUTE/WEAR PLATE

Cast iron ASTM A-48 class 30, replaceable with external clearance adjustment.

SEAL PLATE

Alloy steel no. 4140, replaceable.

PEDESTAL

Cast iron ASTM A-48 class 30.

BEARING - PUMP END

Single ball, radial and thrust load, oil lubricated.

BEARING - DRIVE END

Single ball, radial and thrust load, oil lubricated.

PEDESTAL AND BEARING LUBRICATION

SAE no. 30 non detergent oil, pedestal includes oil level sight gauges.

SEAL

Design: single, mechanical, grease lubricated by self-feeding lubricator.

Material: carbon / ceramic / Buna-N.

CHECK VALVE

Elbow and weights are cast iron ASTM A-48 class 30, neoprene flap valve.

SQUARE RINGS

Buna-N.

HARDWARE

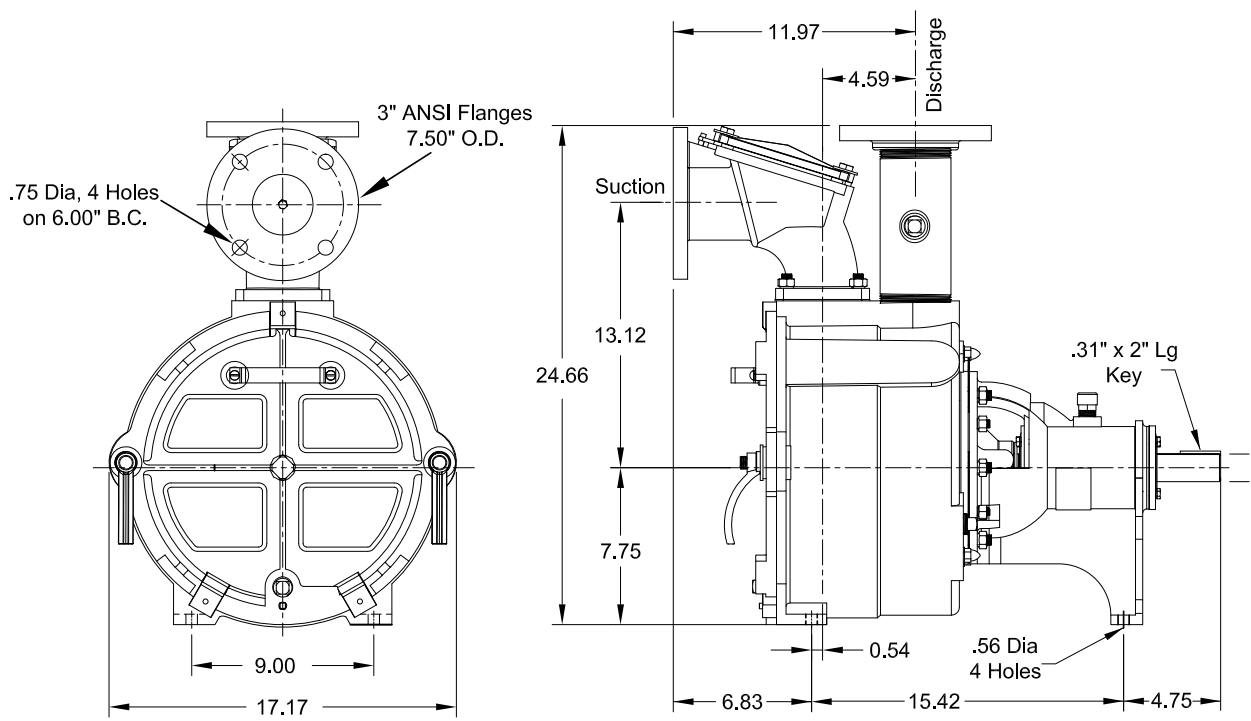
Corrosion resistant steel.

PAINT

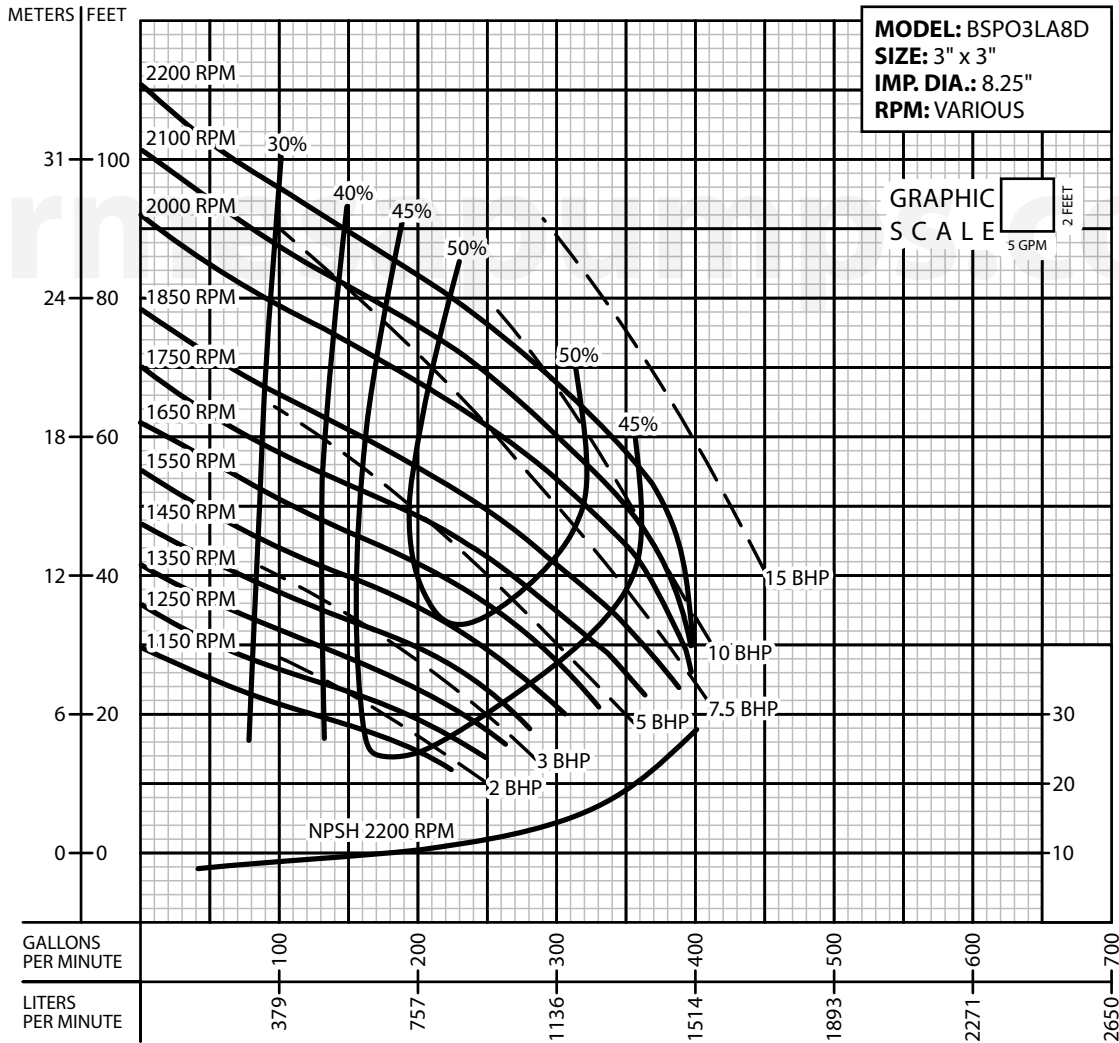
Air dry enamel, water based.

OPTIONAL EQUIPMENT

Flexible coupled assy, with base OSHA guard and electric motor.



IMPORTANT! - Do not use in explosive atmosphere or for pumping volatile flammable liquids.



IMPORTANT!

1. Never use this pump to handle explosive liquids.
2. This pump is not approved to be used in swimming pools, recreational installations or any application where human contact may be common.
3. Pump may be operated "dry" for extended periods without damage to motor and/or seals.
4. Testing is performed with water specific gravity of 1.0 @ 68 °F (20 °C); other fluids may vary performance.